



**TECH
COATINGS**

FIRE RATED SYSTEMS

TECHNICAL DATA SPECIFICATION

TDS: PTR-NLS60

Fire Rated Wall Penetrated by a Steel C Section Purlin

TECHNICAL DATA SPECIFICATION

System	PenoLock
TDS	PTR-NLS60
Separating Element	Fire Rated Wall
Fire Resistance Rating	--/60/60

System Description

PTR-NLS60 has been tested in accordance with AS 1530.4:2014 to provide a --/60/60 fire resistance rating (FRR) to a fire wall penetrated by a steel C section purlin.

Materials

FBL-100 Intumescent Coating	GIB Fyreline Pattress
PaintPlus Galv Coat	GIB Fire Soundseal
Shinagawa Ceramic Fibre	GIB 41mm Grabber Screws

Material(s) Technical Data

FBL-100

Description	Intumescent Coating
Colour	White
Specific Gravity	7.5 – 8.5
PH Range	7.5 – 8.5
Weight/Litre	1.38kg
Volume Solids	68%
Weight Solids	70%
Viscosity	1800cP
VOC	19 g/L (Low)
Adhesion-Strength	400psi
Shore D hardness	77 (extra hard)
Scrub-Resistance	35 cycles

PaintPlus Galv Coat

Description	Acrylic Galvanised Iron Primer
Colour	Mid Grey
VOC	2g/l
Application Temp	10°C – 30°C
Touch Dry	15 minutes
Re-Coat	120 minutes
Applied DFT	32µm
Practical Coverage	12m ²

TECHNICAL DATA SPECIFICATION

Material(s) Technical Data (cont.)

Ceramic Fibre

Description	Shinagawa Ceramic Fibre
Type	STD 1260
Density	128kg/m ³
Thickness	25mm

GIB Fyreline Pattress

Description	GIB 13mm Pattress
Colour	Pink

GIB Fire Soundseal

Description	Sealant
Density	1.63g/cm ³
Colour	Red
Application Temp	5°C – 30°C
Cure Rate	1 day per 1mm
Skin Time	15 min @ 25°C/50% RH
Can be Painted	Paintable after 24 hours @ 20°C/50% RH

GIB Grabber Self Tapping Screws

Description	Grabber Screw
Density	41mm

TECHNICAL DATA SPECIFICATION

Installation Instruction

1. Surface Preparation

Ensure all surfaces to be coated are clean, free of dust, debris, and oil. Thoroughly clean the galvanised steel purlin using a green scouring pad and isopropyl alcohol.

2. Installation Ceramic Fibre

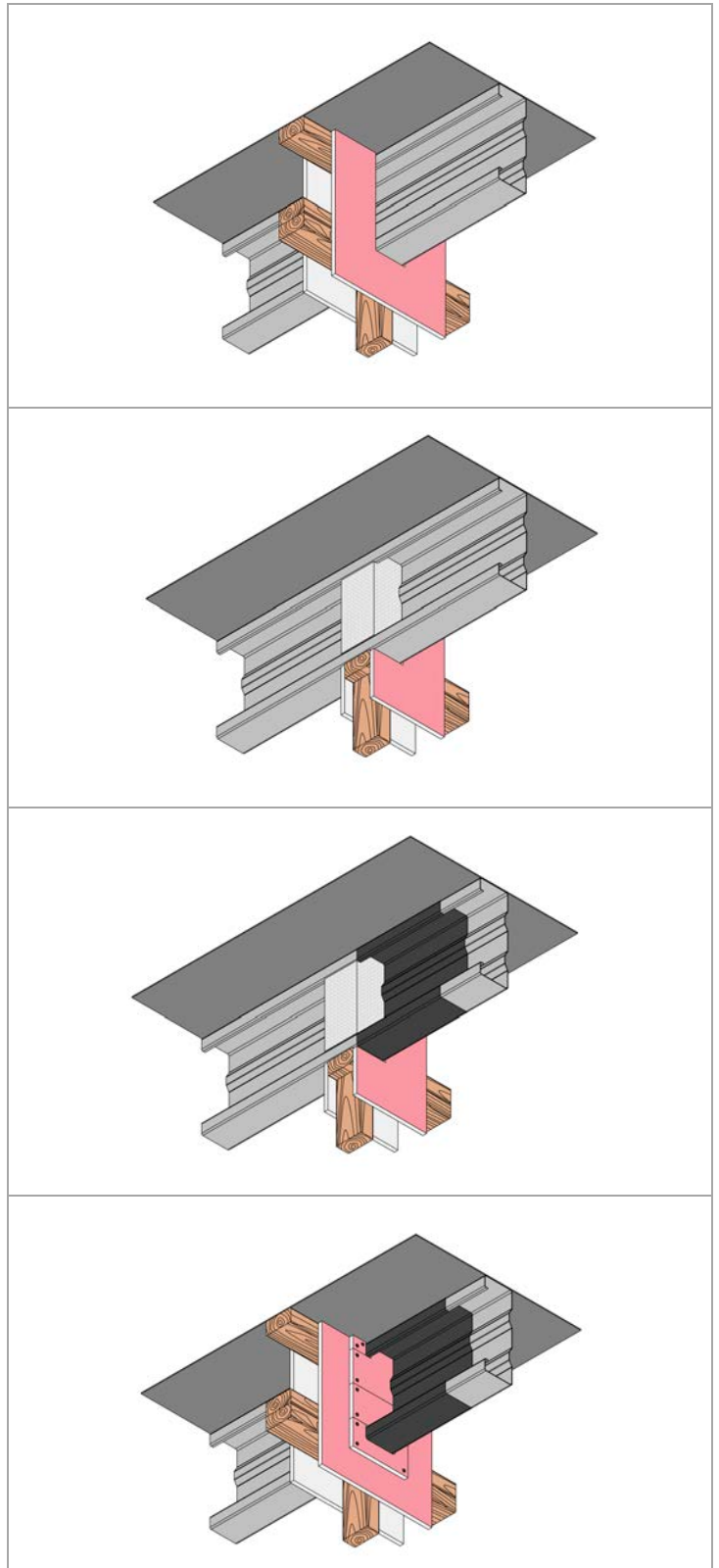
Once the primer has dried, install the ceramic fibre inside the cavity left by the purlin. The ceramic fibre should be approx. 3 times the height of the purlin, and at least as thick as the wall.

3. Primer Application

Once the purlin has dried, using a brush apply PaintPlus Galv Coat to the areas of the purlin that will be coated with FBL-100.

4. Pattress Installation

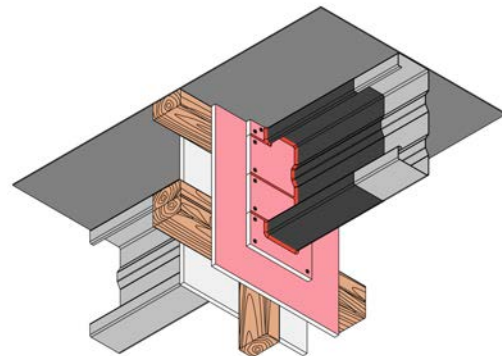
Once the primer has cured, cut the pattress into pieces and friction fit to the purlin and screw off using 41mm x 6g GID Grabber Screws.



TECHNICAL DATA SPECIFICATION

5. Mastic Application

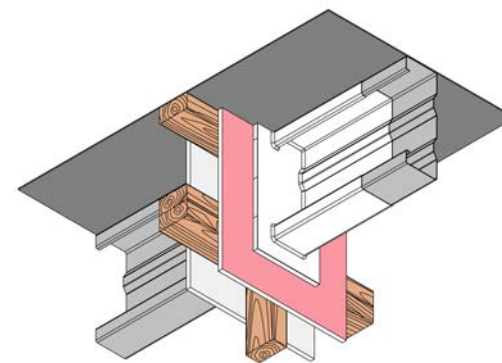
Fill any annular gap less than 5mm, and any joints in the pattress with GIB Fire Soundseal.



6. Intumescent Coating Application

When GIB Fire Soundseal has dried, apply FBL-100 by brush until the last tooth of the WFT Comb provided has paint on it.

Paint the entire pattress and paint the steel purlin to 300mm from the wall.



7. Topcoat Application

Tech Coatings recommends using a high-quality topcoat from a reputable supplier. This will protect FBL-100 from any unforeseen environmental or mechanical damage.

Supplier Contact Details

Tech Coatings Ltd.
www.techcoatings.co.nz

technical@techcoatings.co.nz

DISCLAIMER:

Tech Coating NZ Ltd will have no liability to any party whatsoever in respect of the performance and/or fitness for purpose of the specification in the event of the claimant not being able to demonstrate compliance with the 'TCNZ Technical Application Manual, Interior substrates'. Tech Coatings NZ Limited is not responsible for determining the suitability of FBL-100 to substrates other than those that we have tested. The information contained in this document is given to the best of Tech Coatings NZ Ltd knowledge based on testing and practical experience. *Tech Coatings NZ Limited is the exclusive distributor (Supplier) for the manufacturer of this product, International Coating Group (Manufacturer). To the extent the Supplier supplies Goods to a Consumer pursuant to the Consumer Guarantees Act 1993 (Act), you are entitled to the guarantees set out within the Act, including any additional applicable remedies under New Zealand consumer law against the Manufacturer. These rights are the only guarantees which the Supplier offers in relation to this Good and are, to the fullest extent permitted by law, in lieu of all other express or implied warranties applicable to the Good whether statutory or otherwise. This guarantee applies to defects in the manufacture or formulation of the Good and does not cover failure caused by any factors beyond our control.

This document contains information and content that is proprietary to Tech Coatings NZ Limited and is the intellectual property of Tech Coatings NZ Limited. This document and its content are protected by Copyright laws globally.